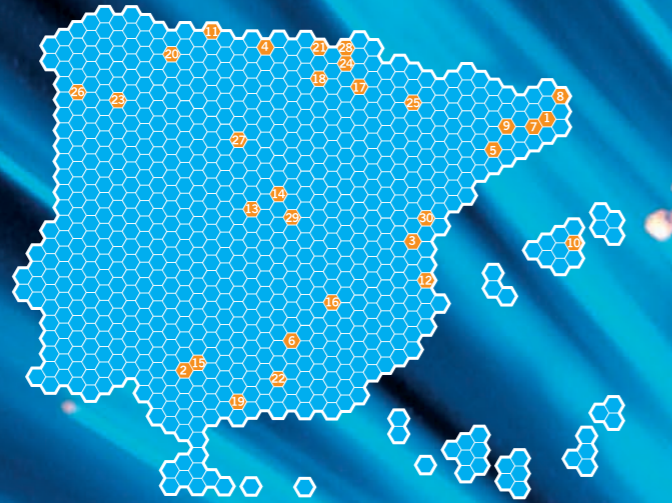


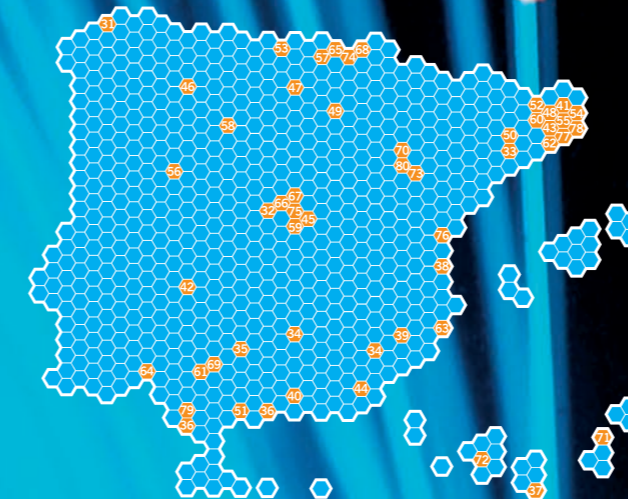
FULL MEMBERS

- 1 22@Barcelona
- 2 Aerópolis, Parque Tecnológico Aeroespacial de Andalucía
- 3 Centro de Desarrollo Tecnológico de la Universidad de Cantabria (CDTUC)
- 4 Ciudad Politécnica de la Innovación
- 5 Fundació Parc d'Innovació La Salle
- 6 GEOLIT, Parque Científico y Tecnológico
- 7 Parc Científic de Barcelona
- 8 Parc Científic i Tecnològic de la Universitat de Girona
- 9 Parc Tecnològic del Vallès
- 10 Parque Balear de Innovación Tecnológica (PARCBIT)
- 11 Parque Científico – Tecnológico de Gijón
- 12 Parque Científico de Alicante
- 13 Parque Científico de Universidad Carlos III (Leganés Tecnológico)
- 14 Parque Científico de Madrid
- 15 Parque Científico y Tecnológico Cartuja 93
- 16 Parque Científico y Tecnológico de Albacete
- 17 Parque de Innovación de Navarra
- 18 Parque Tecnológico de Álava
- 19 Parque Tecnológico de Andalucía
- 20 Parque Tecnológico de Asturias
- 21 Parque Tecnológico de Bizkaia
- 22 Parque Tecnológico de Ciencias de la Salud de Granada
- 23 Parque Tecnológico de Galicia
- 24 Parque Tecnológico de San Sebastián
- 25 Parque Tecnológico Walqa
- 26 Parque Tecnológico y Logístico de Vigo
- 27 Parques Tecnológicos de Castilla y León
- 28 Polo de Innovación Garaia
- 29 TECNOALCALÁ. Parque Científico – Tecnológico de la Universidad de Alcalá
- 30 València Parc Tecnològic

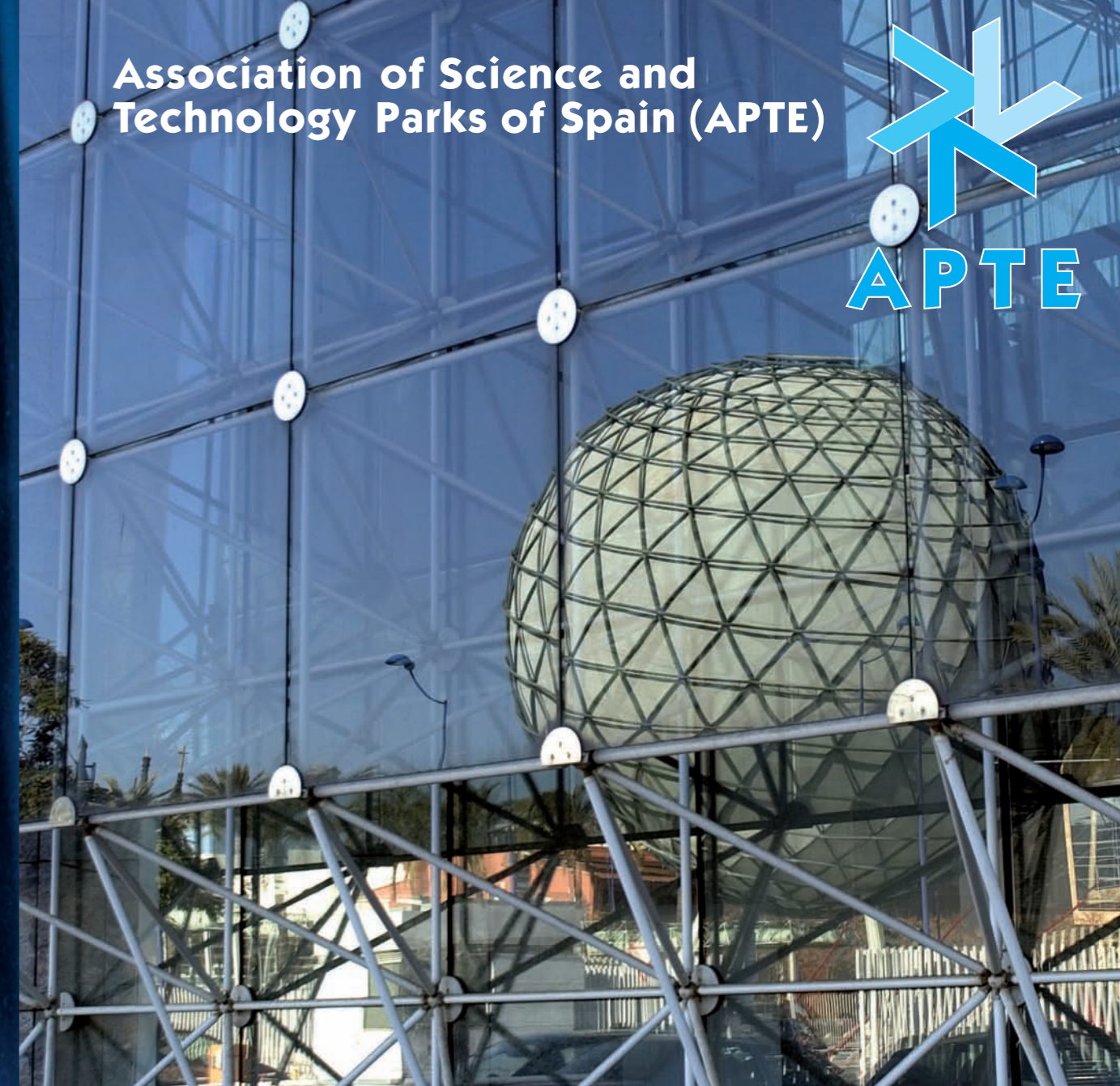


ASSOCIATED MEMBERS

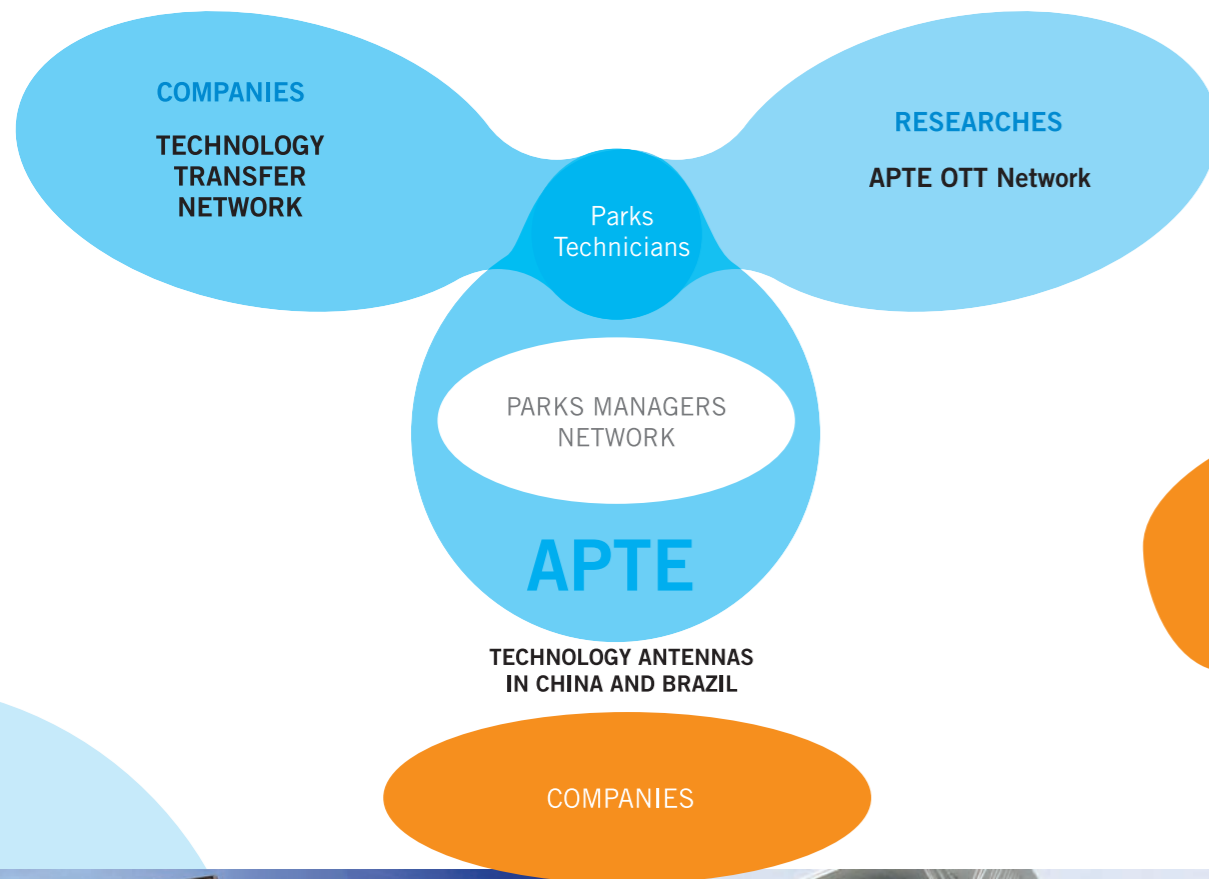
- 31 Fundación Ferrol Metrópoli
- 32 Universidad Pontificia Comillas de Madrid
- 33 Parc de Recerca UAB
- 34 Parque Científico de Murcia
- 35 Parque Científico – Tecnológico de Córdoba S.L. (Rabanales 21)
- 36 Universidad de Cádiz
- 37 Parque Científico Tecnológico de la Universidad de las Palmas de Gran Canaria
- 38 Parc Científic Univesitat de València
- 39 Parque Tecnológico Fuente Álamo
- 40 Parque Metropolitano, Industrial y Tecnológico de Granada
- 41 Parque de Investigación e Innovación - Parque UPC (Universitat Politècnica de Catalunya)
- 42 Parque Tecnológico de Extremadura
- 43 Consorci pel Desenvolupament del Parc Empresarial d'activitats Aeroespacials i de la Mobilitat de Viladecans
- 44 Parque de Científico y Tecnológico de Almería (PITA)
- 45 Móstoles Tecnológico
- 46 Parque Científico de León
- 47 Parque Científico – Tecnológico de la Universidad de Burgos
- 48 Parc de Recerca Biomèdica de Barcelona (PRBB)
- 49 Parque Digital de La Rioja
- 50 Parc Científic i Tecnològic Agroalimentari de Lleida
- 51 Parque Tecnoalimentario de Vélez Málaga-Axarquía
- 52 Parque Tecnológico TecnoCampusMataró
- 53 Parque Científico y Tecnológico de Cantabria
- 54 b_TEC
- 55 Parc Tecnològic Barcelona Nord
- 56 Parque Científico de la Universidad de Salamanca
- 57 Oñati Ciudad Universitaria y Tecnológica
- 58 Parque Científico Universidad de Valladolid+d
- 59 Área Tecnológica del Sur
- 60 Parc Central-Parc Tecnològic de la Catalunya Central
- 61 Ciudad del Conocimiento (Parque de Investigación y Desarrollo Dehesa de Valme S.A.)
- 62 Tecnoparc, Parc Tecnològic del Camp
- 63 Parque Científico y Empresarial Universidad Miguel Hernández de Elche
- 64 Parque Científico-Tecnológico de Huelva (Descubrimiento)
- 65 Polo Tecnológico de Eibar
- 66 Parque Tecnológico Ciudad de Madrid
- 67 Parque Científico y Tecnológico de la Universidad Politécnica de Madrid
- 68 Parque Tecnológico de Estella
- 69 Parque Científico y Tecnológico Olavide - Alcalá - Sevilla
- 70 Fundación Parque Científico Tecnológico Aula Dei
- 71 Parque Tecnológico de Fuerteventura
- 72 Parque Científico y Tecnológico de Tenerife
- 73 Parque Tecnológico del Motor de Aragón
- 74 Polo de Innovación Goierri
- 75 Parque de Innovación La Salle Madrid
- 76 Espaitec, Parc Científic Tecnològic Empresarial de la Universitat Jaume I
- 77 Esade ^ Creapolis Parc de la Creativitat, S.L.
- 78 Parc de Recerca UPF- Ciències Socials i Humanitats
- 79 Parque Tecnológico Agroindustrial de Jerez S.A.
- 80 Parque Científico Tecnológico TecnoEbro



Association of Science and Technology Parks of Spain (APTE)



CONSOLIDATION OF A NETWORK OF NETWORKS



The Spanish Association of Science and Technology Parks is constituted in 1988 by the managers of the first 6 Spanish Parks. APTE currently has:

- >> 80 members: 30 operative parks and 50 in development.
- >> 3.809 companies
- >> 100.474 employees
- >> 13.230 millions of Euros of turnover
- >> 14.160 persons dedicated in R&D activities

The Association has reached to be a basic pillar of the Spanish System of Science-Technology-Business.



How APTE fosters the DEVELOPMENT of its members?

Trough its Network of Park's Managers:

This Network is made up of the managers and directors of Science and Technology parks and is responsible for promoting the development of emerging parks through dissemination of the experience acquired by established parks.

One of the instruments which has been established by this Network is the Technical Assistance Programme: two consolidated parks' management team advice a third one in development phase. The intention of this initiative is for these parks to shorten their development cycle and reach the operational phase in a short period of time.

How APTE fosters the business COLLABORATION?

Thanks to its Technology Transfer Network constituted by 22 participants from the Science and Technology Parks, a huge amount of information is exchanged about their companies in order to promote collaborations, joint ventures, common researches, new product launching, projects in collaboration and innovation.

The participants carry out activities with their companies in order to promote the business collaboration following a work plan created by the Network's coordinator.

- >> The Network's website (www.apte.org/rtt) has currently more than 1.800 subscribers from the Parks of APTE, at which the companies published their offers and demands.
- >> They request information of companies installed in other parks and encourage the business collaboration trough the deep study of the offers and demands.

How APTE fosters the business INNOVATION?

It has created a new Network: APTE OTT NETWORK.

The aim is to reduce the gap between the offer of the R&D infrastructure within the Parks and the business demand of Science and Technology.

The Research Result Transfer Office (OTT) of APTE is gathering together as well publishing and offering through the Website, all the information available of more than one hundred R&D entities such as Technology Centres, R&D groups and labs, etc... Afterwards, the office not only diffuses all the information gathered to the companies located at the parks but also to the entire society.

How APTE fosters the business INTERNATIONALIZATION?

Trough its TECHNOLOGY ANTENNAS located in two strategic zones: China and Brazil.

The aim of the connexion with these two antennas is to promote the cooperation between the companies from the Spanish Parks and those from China and Brazil.

