

ASSOCIATION OF SCIENCE AND TECHNOLOGY PARKS OF SPAIN (APTE)



Association of Science and
Technology Parks of Spain

WHAT IS APTE?

APTE was created in 1989 by the general managers of the first six science and technology parks in Spain:

- Asturias
- Andalucía
- Madrid
- Barcelona
- Valencia
- Bilbao

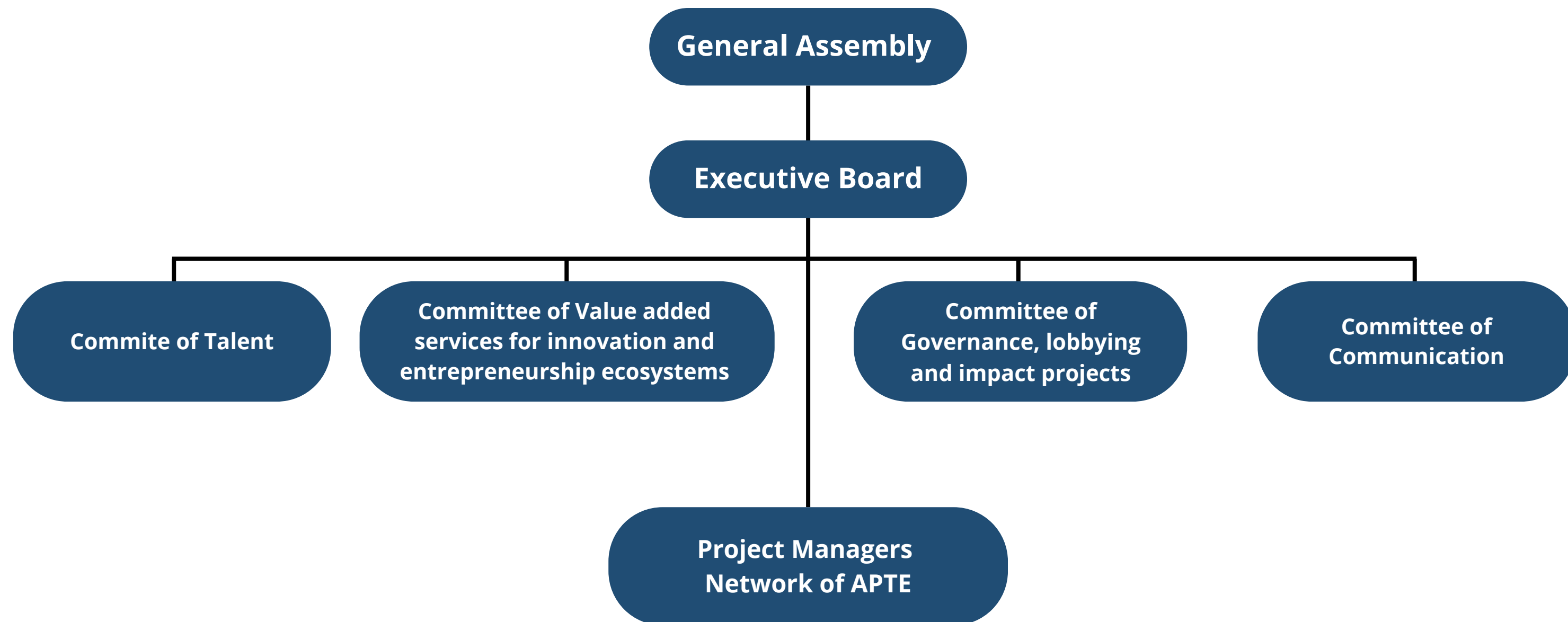


OUR FIGURES

- Members: **51** Full Members, **1** Affiliate and **4** Collaboratos
- **20** STPs are promoted by Universities
- **40** Universities are collaborating with STPs
- Companies: **5,908**
- Turnover: **28,917** million €
- Employment: **161,435**
- R&D investment: **1,701.47** million €
- R&D Employment: **38,656**
- Foreign companies: **396**
- Companies in incubation: **819**
- Granted patents: **534**



OUR TEAM



EXECUTIVE BOARD AND DELEGATED COMMITTEE



Felipe Romera Lubias
President



Amaia Bernarás Iturrioz
Secretary



Javier Taibo Gallego
Vice-president



Javier González
Vice-president



Itziar Epalza
First vice-president and president of the Communication Commission



Sonia Verde
Treasurer and Vice-president of Governance, Lobbying and Impact Projects Committee



Maria Terrades
Vice-president



Pepa Padrón
Vice-president



Luis Pérez Díaz
Vice-president and president of the Governance, Lobbying and Impact Projects Commission



Josep M. Piqué
Vice-president and president of the Value Added Services Commission for Entrepreneurship and Innovation ecosystems



Virgilio Díaz
Vice-president



Augusto Cobos
Vice-president



Juan Antonio Bertolín
Vice-president and president of the Talent Committee



Francisco Mora
Vice-president

WHERE ARE STPS LOCATED?

Full members

Affiliate and Collaborators members





Parque Tecnológico de Euskadi



Parque Tecnológico de Galicia - Tecnópolis



Málaga TechPark



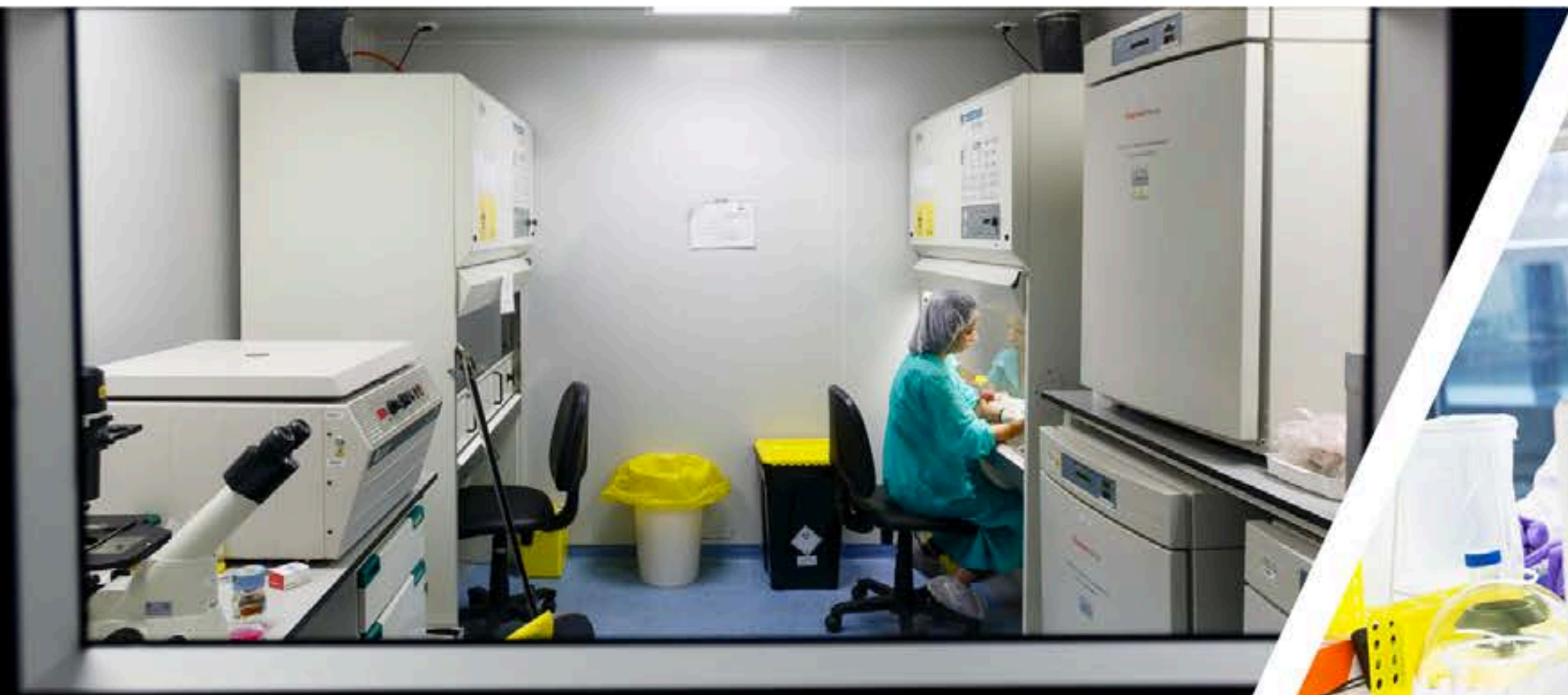
Parc Científic de Barcelona



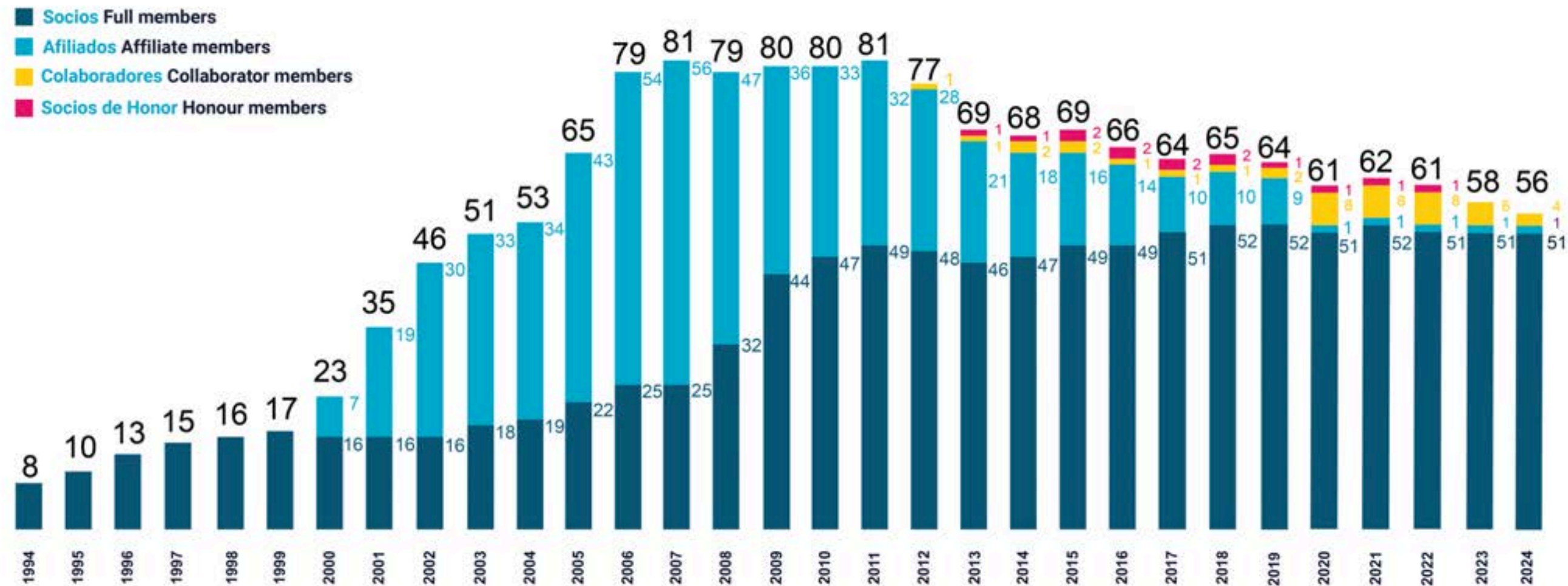
PC de la UC3M



Espaitec

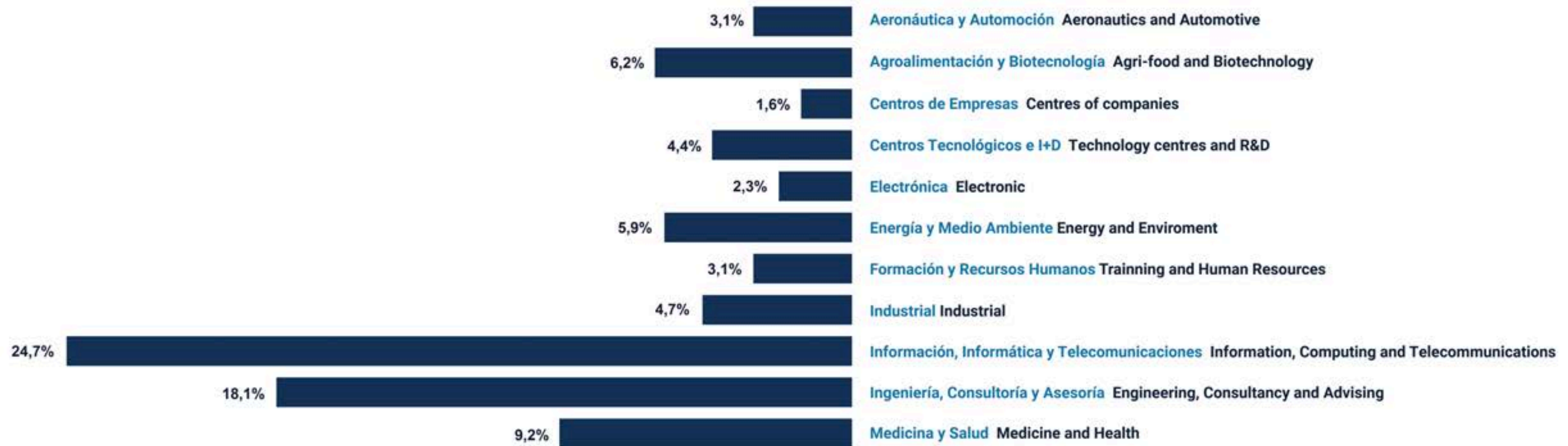


EVOLUTION: MEMBERS OF APTE



51 Full Members, 1 Affiliate and 4 Collaboratos

EVOLUTION: SECTORS OF ACTIVITY



The sector with the highest number of companies in APTE member parks is the Information, Computer and Telecommunications sector with 24.7%.

COMPANIES



5,908

By the end of 2023, the number of companies and institutions installed in APTE science and technology parks was 5,908.

TURNOVER



28,917

The turnover of the companies in the parks in 2023 has reached a total of 28,917 million euros.

EMPLOYMENT



161,435

The volume of employment has reached 161,435 employees
by the end of 2023.

R&D STAFF



38,656

At the end of 2023, a total of 38,656 people were registered as working in Research and Development (R&D) in APTE member science and technology parks.

IMPACT

Study “The impact of Spanish Science and Technology Parks on business innovation” Researcher Aurelia Modrego, University Carlos III of Madrid, 2011

innovative SMEs located in parks outperform the rest in a proportion of 40% in sales of new products, ie SMEs located in these areas can increase their sales up to 40% compared to similar companies that are installed elsewhere”.

PROMOTING SOFTLANDING BETWEEN STPS

It is a project promoted by APTE to foster the mobility of enterprises between STPs offering the opportunity to spend short periods of time in their facilities (softlanding).

The main tool of the project is a website where you can apply to participate.


www.apte.org/enterpriseeurolodging/



PTE DISRUPTIVE

DISRUPTIVE is the **Spanish technology platform for disruptive technologies** promoted by the Association of Science and Technology Parks of Spain (APTE) and focuses on the study, dissemination and promotion of the application of disruptive digital technologies among Spanish companies and organisations.

<https://ptedisruptive.es/>



Blockchain **Big Data**
Artificial Intelligence **5G**
Cybersecurity **Quantum Computing**
Digital Accessibility

ptedisruptive.es

#PTEDisruptive



MARKETPLACE PTE DISRUPTIVE

Collaboration Marketplace

In this space, entities from any country can publish **offers or demands** for collaborations. Only those offers and requests related to R & D & i in the field of digital technologies will be published.

En este espacio, entidades de cualquier país pueden publicar **ofertas o demandas** de colaboración. Sólo se publicarán aquellas ofertas y demandas relacionadas con I+D+i en el ámbito de las tecnologías digitales.

[Fill out the form/Enviar formulario](#)

<https://ptedisruptive.es/liderazgo/marketplace/>

OFFERS AND REQUESTS FOR SCIENTIFIC-TECHNOLOGICAL COLLABORATION

Offers and requests for scientific-technological collaboration

¿En qué consiste? Este servicio tiene como objetivo promover la colaboración con las más de 5.700 empresas y entidades de I+D+i instaladas en los parques científicos y tecnológicos miembros de APTE.



Conoce el catálogo de ofertas de colaboración



Conoce las demandas de colaboración

Publica tus ofertas o demandas de colaboración



Publica tu oferta



Publica tu demanda

www.apte.org/en/offers-and-requests-for-scientific-technological-collaboration-

OTHER ACTIVITIES

- APTENISA – Startup ideation and acceleration programme
- APTEFORMA – APTE digital training classroom
- Science and Technology in feminine
- APTE top 100 startups

<https://www.apte.org/en/services>



THANK YOU!

Association of Science and Technology
Parks of Spain (APTE)

www.apte.org

#TheParksContribute



+34 951 23 13 06



info@apte.org

